



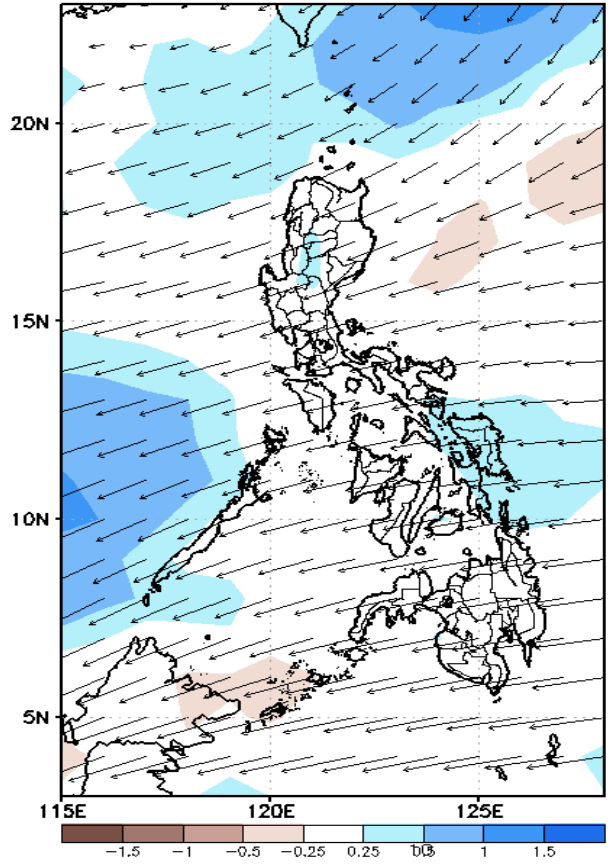
Week 1 & Week 2 Forecast for the Philippines using GEFS Model



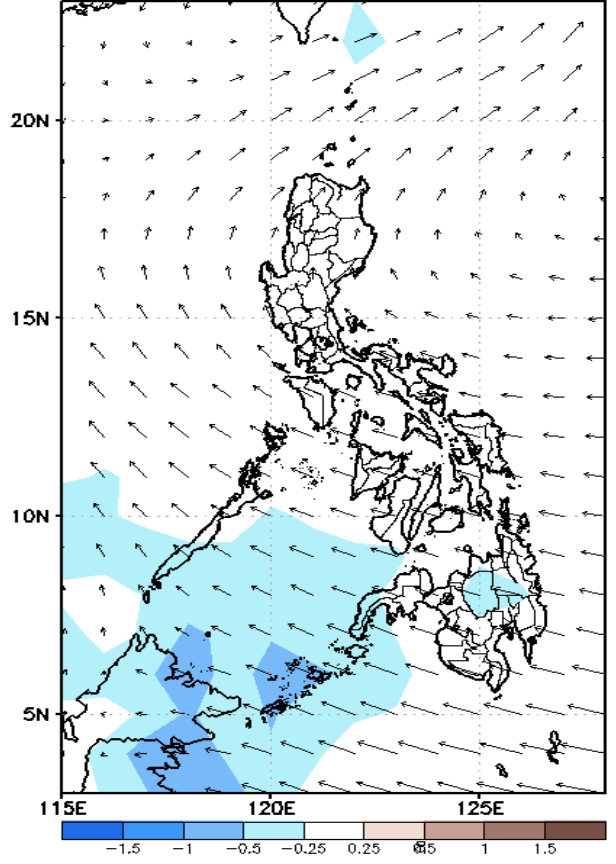
GEFS Week-1 Forecasts: Wind Anomaly Forecast

Week 1: Sep 05-11, 2022

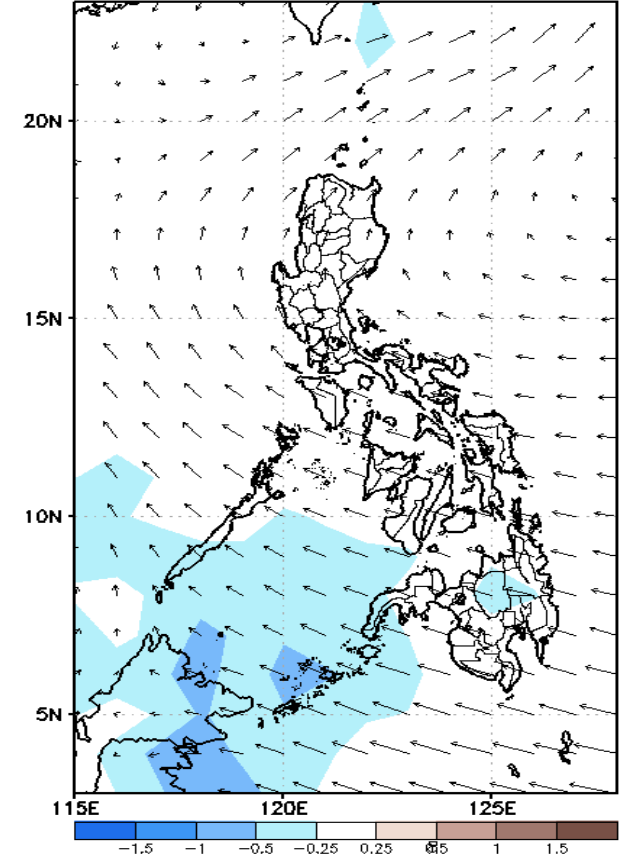
GEFS Week-1 200-hPa Divergence and Wind Anom
Valid: 20220905 - 20220911



GEFS Week-1 700-hPa Divergence and Wind Anomal
Valid: 20220905 - 20220911



GEFS Week-1 850-hPa Divergence and Wind Anom
Valid: 20220905 - 20220911

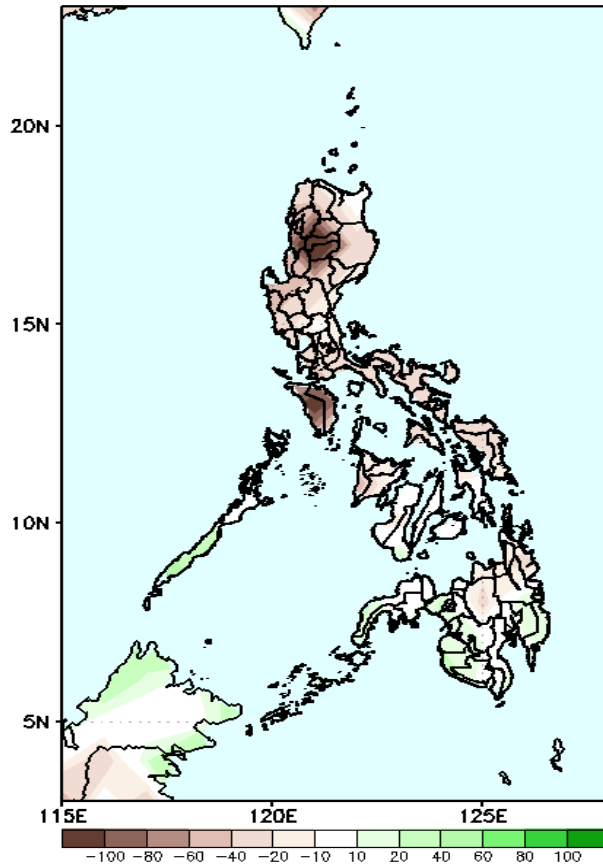


Easterlies affecting most parts of the country during the forecast period.

Precipitation Anomaly and Exceedance Probability > 25/50 mm

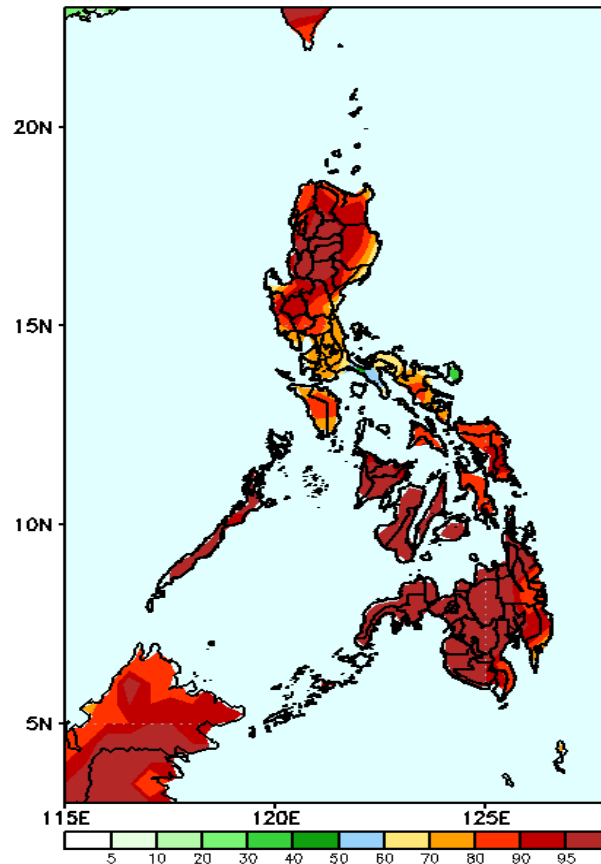
Week 1: Sep 05-11, 2022

GEFS Week-1 Precip Anomaly
Valid: 20220905 - 20220911



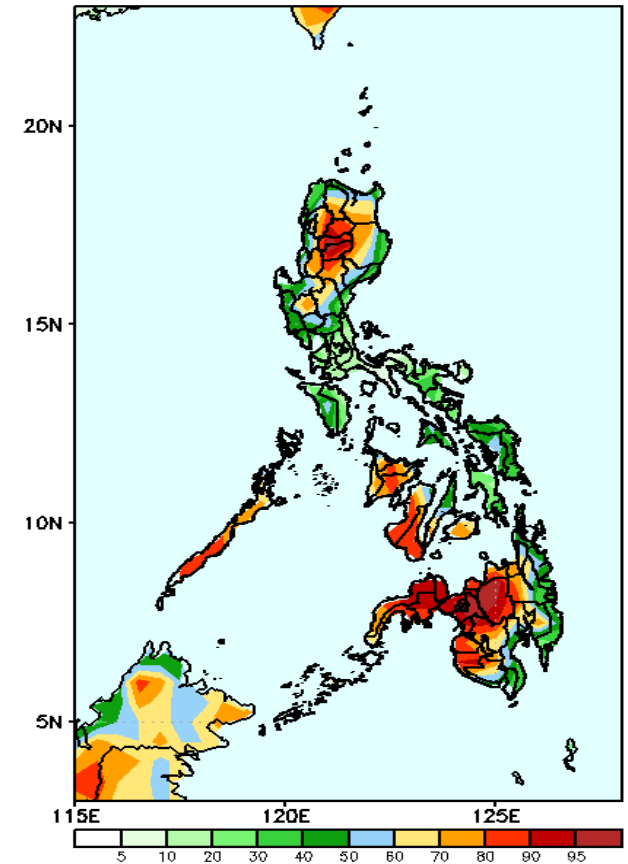
Rainfall deficit of more than 100mm is expected in most parts of Cordillera Region, 10-30mm increase of rainfall in western and southern Mindanao and 40-80mm for the rest of the country during the forecast period.

GEFS Week-1 Exceedance Prob. > 25mm
Valid: 20220905 - 20220911



High probability of rainfall to exceed 25mm in most parts of the country during the forecast period.

GEFS Week-1 Exceedance Prob. > 50mm
Valid: 20220905 - 20220911



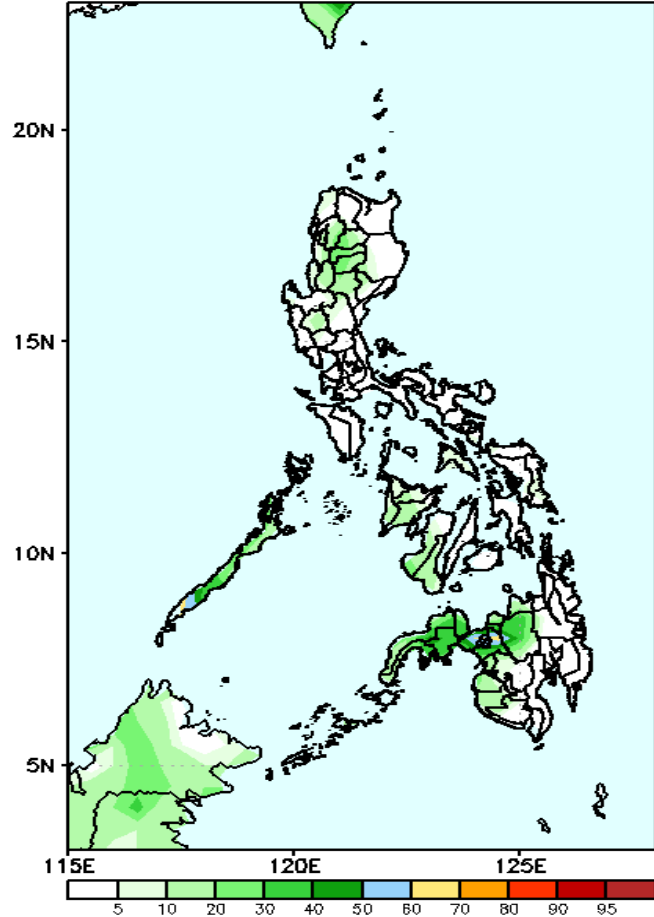
High probability of rainfall to exceed 50mm in most parts of Northern Luzon, Tarlac, Nueva Ecija, western and northern Mindanao while less likely for the rest of the country during the forecast period.



Exceedance Probability > 100/150/200 mm

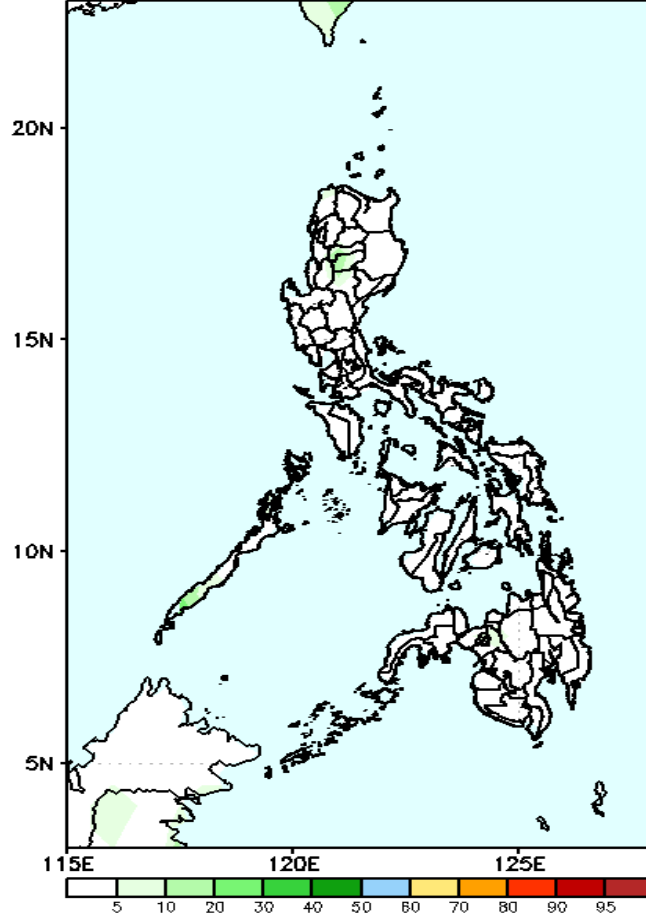
Week 1: Sep 05-11, 2022

GEFS Week-1 Exceedance Prob. > 100mm
Valid: 20220905 - 20220911



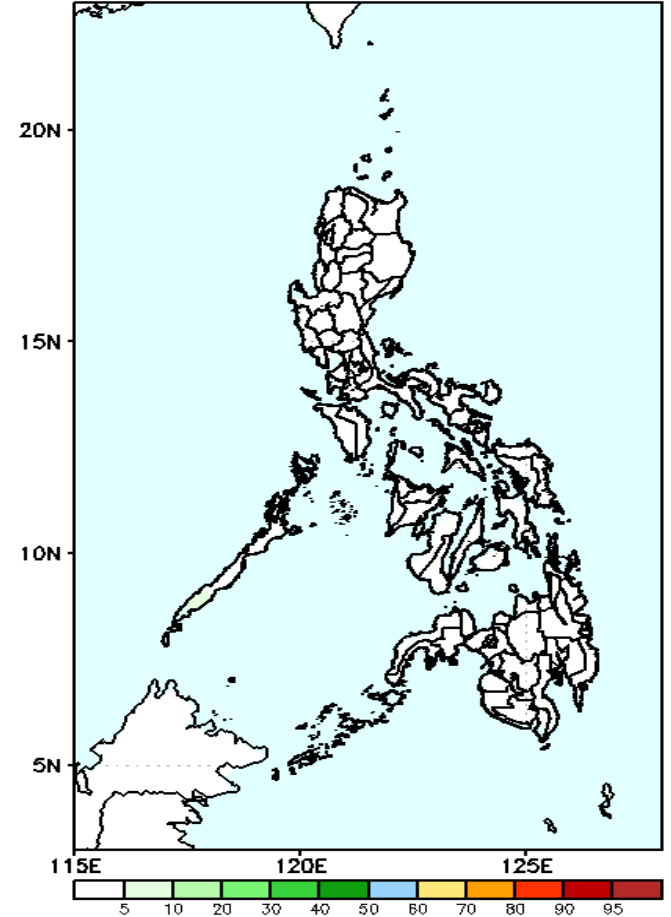
Low probability of rainfall to exceed 100mm in most parts of the country during the forecast period.

GEFS Week-1 Exceedance Prob. > 150mm
Valid: 20220905 - 20220911



Low probability of rainfall to exceed 150mm in most parts of the country during the forecast period.

GEFS Week-1 Exceedance Prob. > 200mm
Valid: 20220905 - 20220911

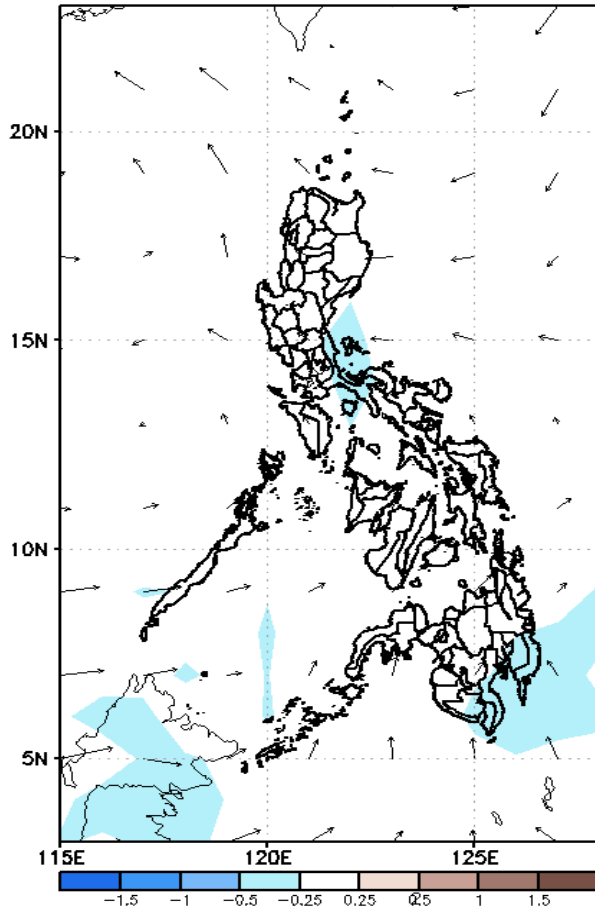


Low probability of rainfall to exceed 200mm in most parts of the country during the forecast period.

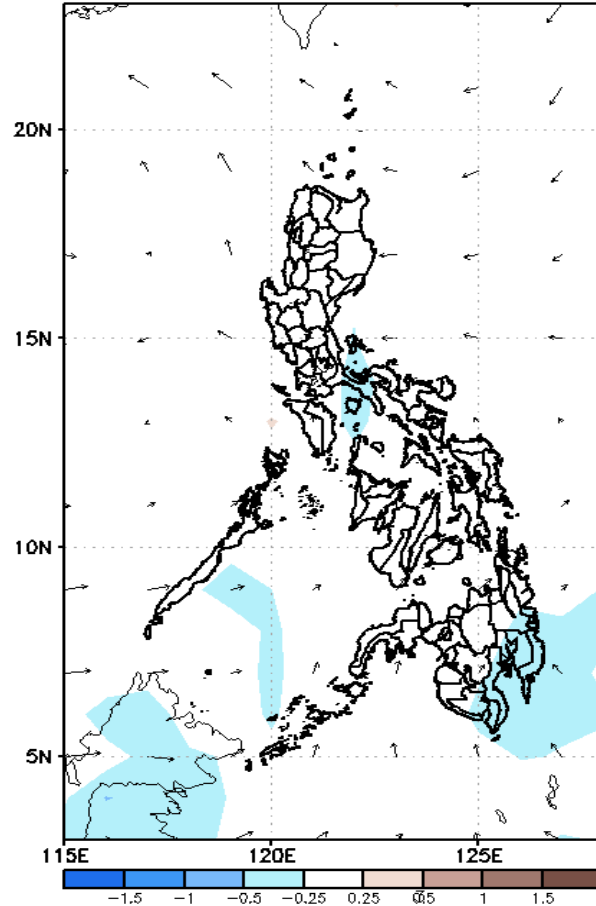
GEFS Week-2 Forecasts: Wind Anomaly Forecast

Week 2: Sep 12-18, 2022

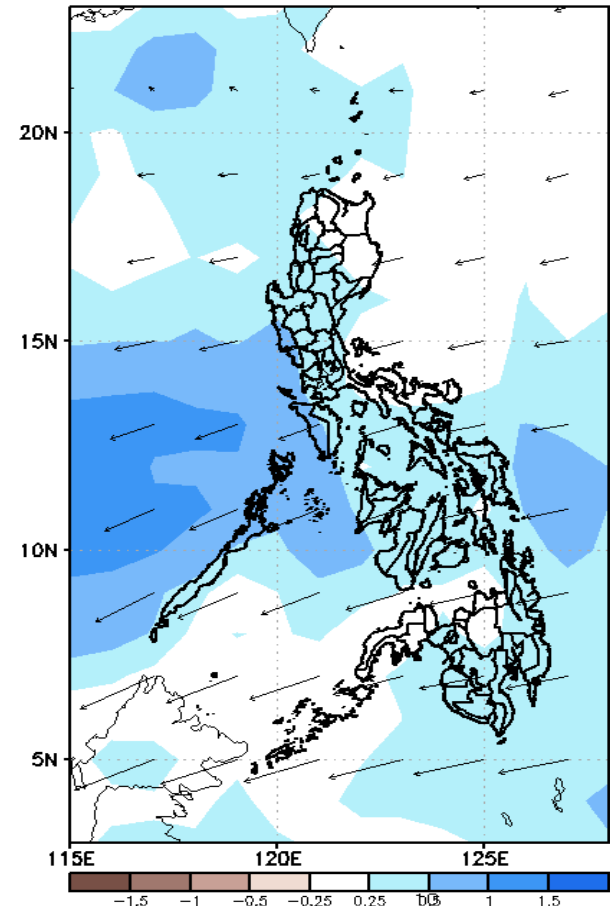
GEFS Week-2 850-hPa Divergence and Wind Anom
Valid: 20220912 - 20220918



GEFS Week-2 700-hPa Divergence and Wind Anom
Valid: 20220912 - 20220918



GEFS week-2 200-hPa Divergence and Wind Anom
Valid: 20220912 - 20220918



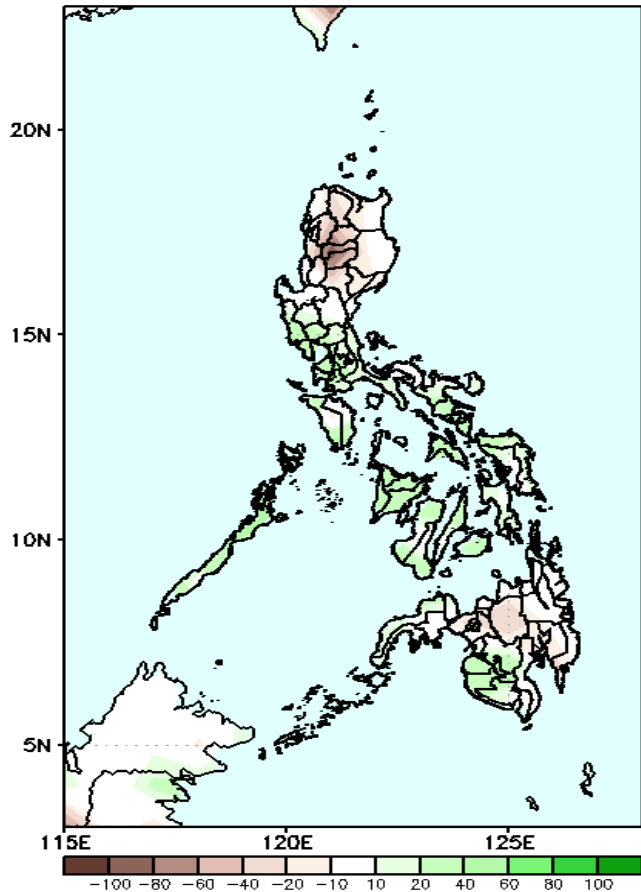
Southwest Monsoon affecting Southern Visayas and Mindanao while Easterlies the rest of the country during the forecast period.



Precipitation Anomaly and Exceedance Probability > 25/50 mm

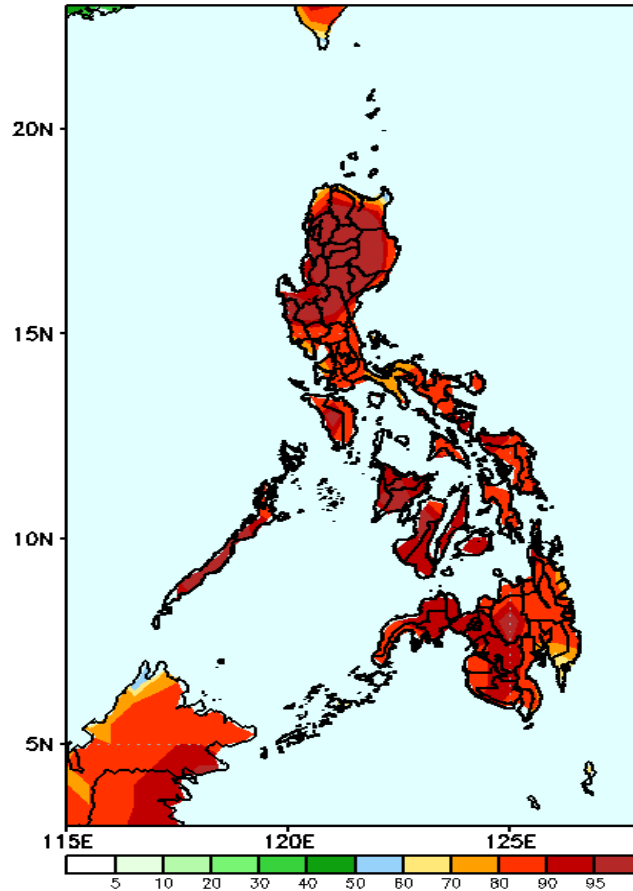
Week 2: Sep 12-18, 2022

GEFS Week-2 Precip Anomaly
Valid: 20220912 - 20220918



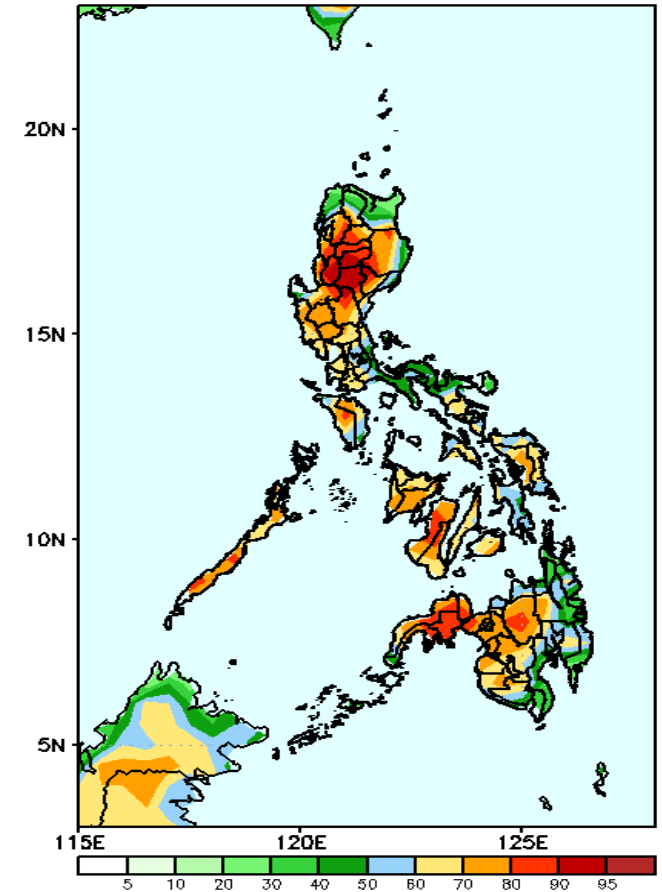
Rainfall deficit of 40-60mm is expected in Cordillera Region and Bukidnon while 20-60mm increase of rainfall for the rest of the country during the forecast period.

GEFS Week-2 Exceedance Prob. > 25mm
Valid: 20220912 - 20220918



High probability of rainfall to exceed 25mm in most parts of the country during the forecast period.

GEFS Week-2 Exceedance Prob. > 50mm
Valid: 20220912 - 20220918

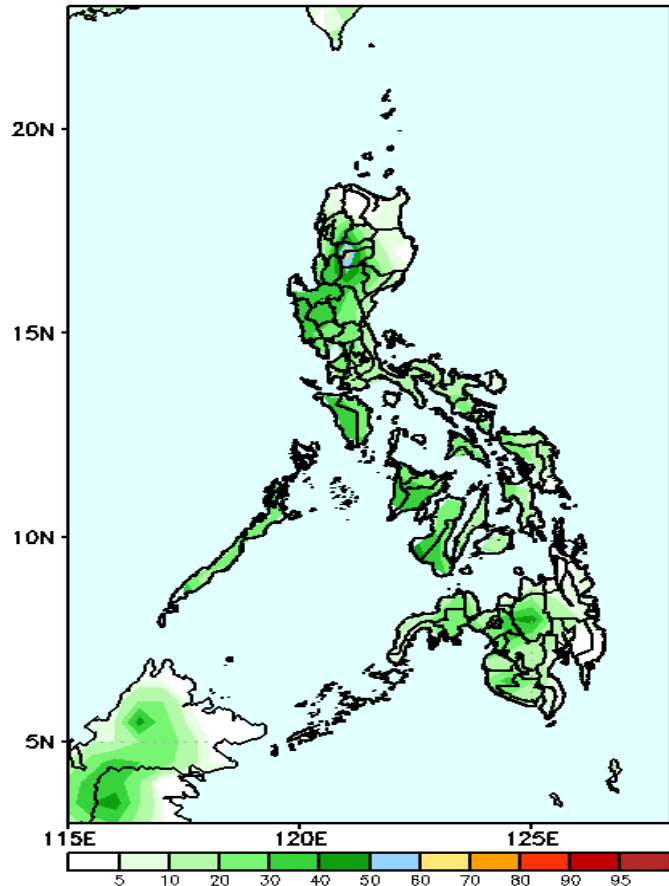


High probability of rainfall to exceed 50mm in most parts of the country except in some areas in extreme northern Luzon, Bicol Region and eastern Mindanao during the forecast period.

Exceedance Probability > 100/150/200 mm

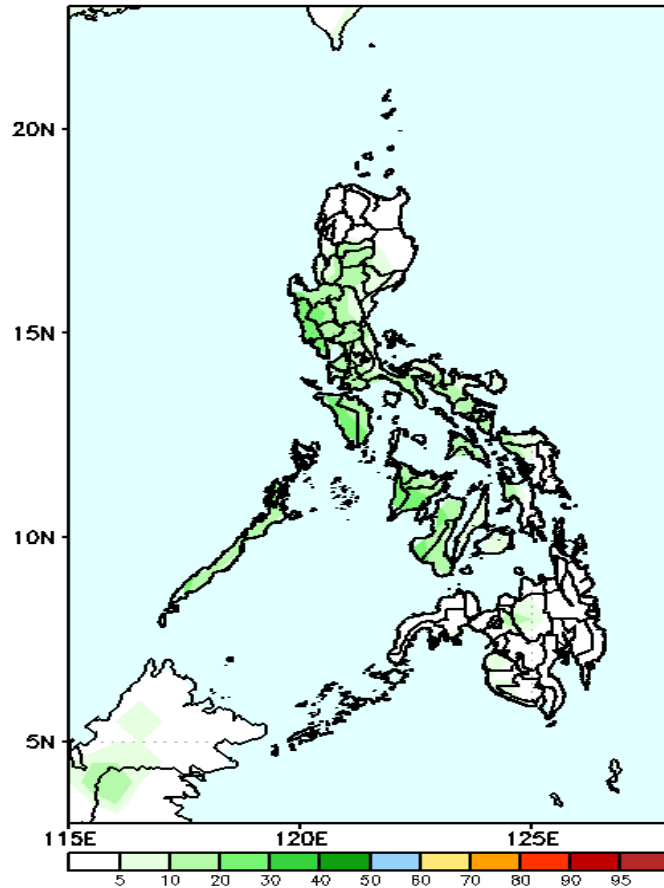
Week 2: Sep 12-18, 2022

GEFS Week-2 Exceedance Prob. > 100mm
Valid: 20220912 - 20220918



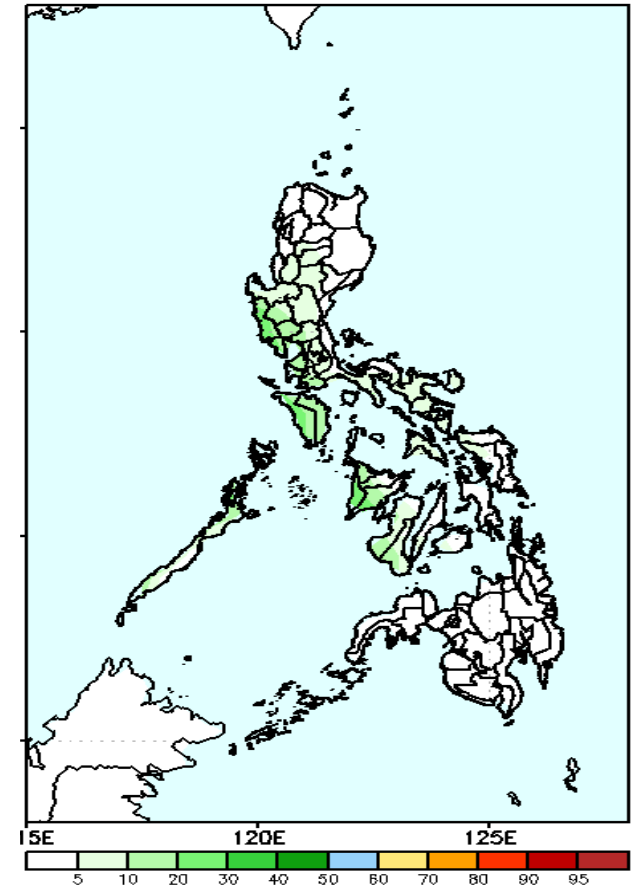
Low probability of rainfall to exceed 100mm in most parts of the country during the forecast period.

GEFS Week-2 Exceedance Prob. > 150mm
Valid: 20220912 - 20220918



Low probability of rainfall to exceed 150mm in most parts of the country during the forecast period.

S Week-2 Exceedance Prob. > 200mm
Valid: 20220912 - 20220918

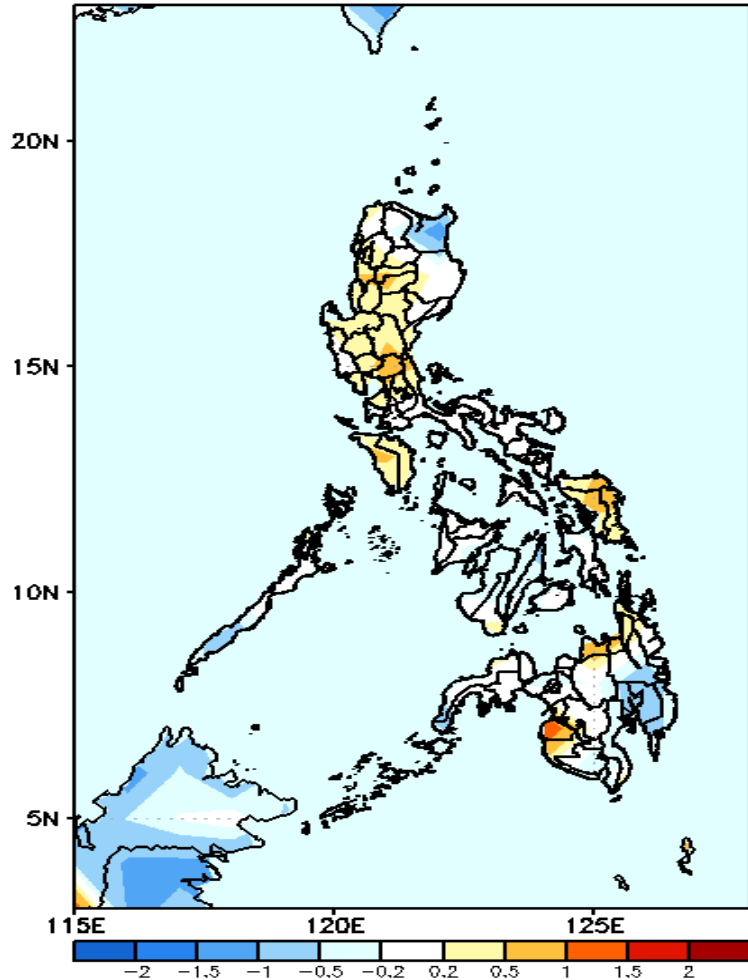


Low probability of rainfall to exceed 200mm in most parts of the country during the forecast period.



GEFS Week-1 & 2 Forecasts: T2m Anomaly

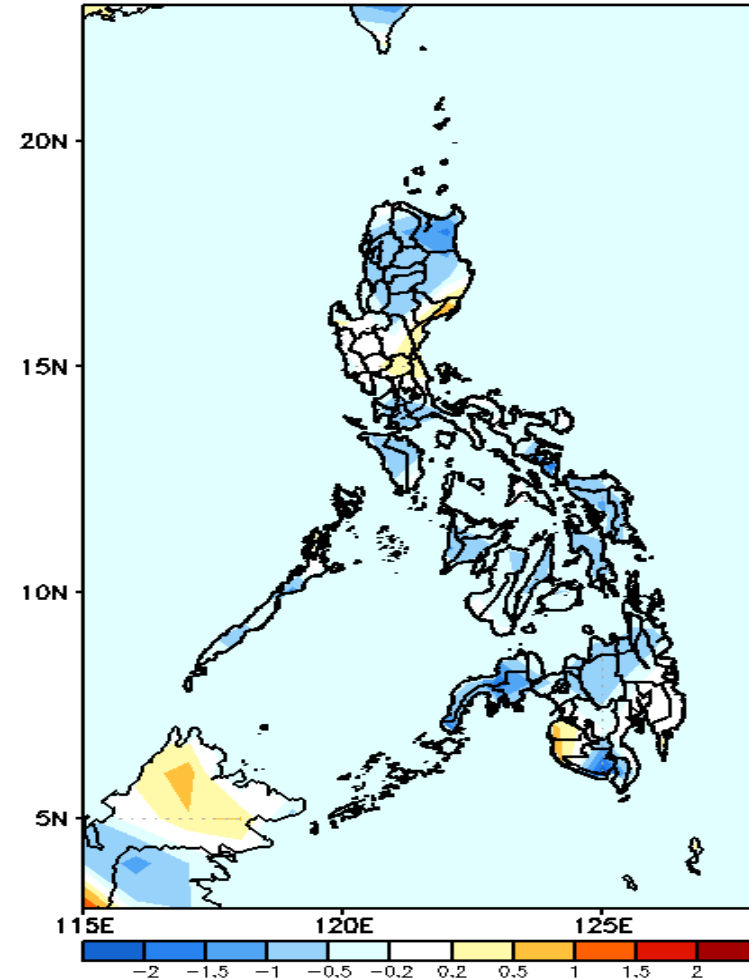
GEFS Week-1 T2m Anomaly
Valid: 20220905 - 20220911



2m Temperature Week 1: Sep 05-11, 2022

Near to slightly warmer than average surface air temperature will likely experience in most parts of the country, warmer in Maguindanao while slightly cooler in Cagayan and Davao Region during the forecast period.

GEFS Week-2 T2m Anomaly
Valid: 20220912 - 20220918



2m Temperature Week 2: Sep 12-18, 2022

Slightly cooler to cooler than average surface air temperature will likely experience in most parts of the country except in eastern parts of Central Luzon, Maguindanao & Sultan Kudarat where slightly warmer temperature is expected during the forecast period.